

# MAXFORCE

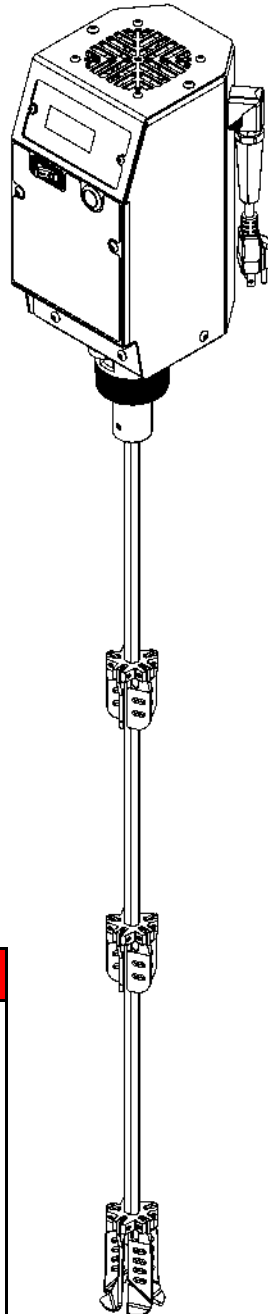
## ELITE e-Agitator



### Product Description

AGITATOR, HIGH VIS, ELEC, ELITE

## Operation & Parts



### WARNING

#### FIRE AND EXPLOSION HAZARD

Use only non-flammable or water-based materials with this equipment. Do not use materials having flash points lower than 140° F (60° C). For more information about your material, request Safety Data Sheet (SDS) from the supplier. Not for use in explosive environments or environments where ignitable vapors may be present. Inspect the work area for potential hazards before operating this equipment.

### Manual Revisions

Revision	Date	Serial No
A	7/13/23	9066742—

**M10442-20-A**

**2845 W Service Rd Eagan, MN 55121**

# Table of Contents

Safety .....	3
Equipment Layout .....	4
Control Panel Layout .....	5
Specifications .....	6
Operation .....	7
Technical Data	
<i>Dimensions</i> .....	8
Parts .....	9
Wiring Diagram .....	13
Warranty .....	16

**For parts, service, and technical assistance,  
contact your equipment distributor:**

# Safety

## General Safety Information

### READ THE MANUAL

- Ensure any operator of this equipment has read and understands the manual before operating.
- Do not attempt to repair or modify this equipment without consulting the manual.

### EQUIPMENT MISUSE HAZARD

- Equipment misuse can cause the equipment to rupture or malfunction and result in serious injury.
- This equipment is for professional use only.
- Read all instruction manuals, tags, and labels before operating the equipment.
- Use the equipment only for its intended purpose. If you are not sure, call your distributor.
- Do not alter or modify this equipment. Use only genuine OEM parts.
- Check equipment daily. Repair or replace worn or damaged parts immediately.
- Comply with all applicable local, state, and national fire, electrical, and safety regulations
- Do not leave the work area while equipment is operating.

### FIRE AND EXPLOSION HAZARD

- Improper grounding, poor ventilation, open flames or sparks can cause a hazardous condition and result in a fire or explosion and serious injury.
- Keep the equipment area free of debris, including solvent, rags and uncontained fuel.
- Use only with non-flammable or water-based materials
- Keep a working fire extinguisher on hand at all times in the work area.

## Equipment Hazards & Warnings

### DANGER

- Do NOT use near solvents or solvent based materials
- Do NOT use near flammable materials or in poorly ventilated areas
- The motor and associated components are not rated for use in explosive environments.

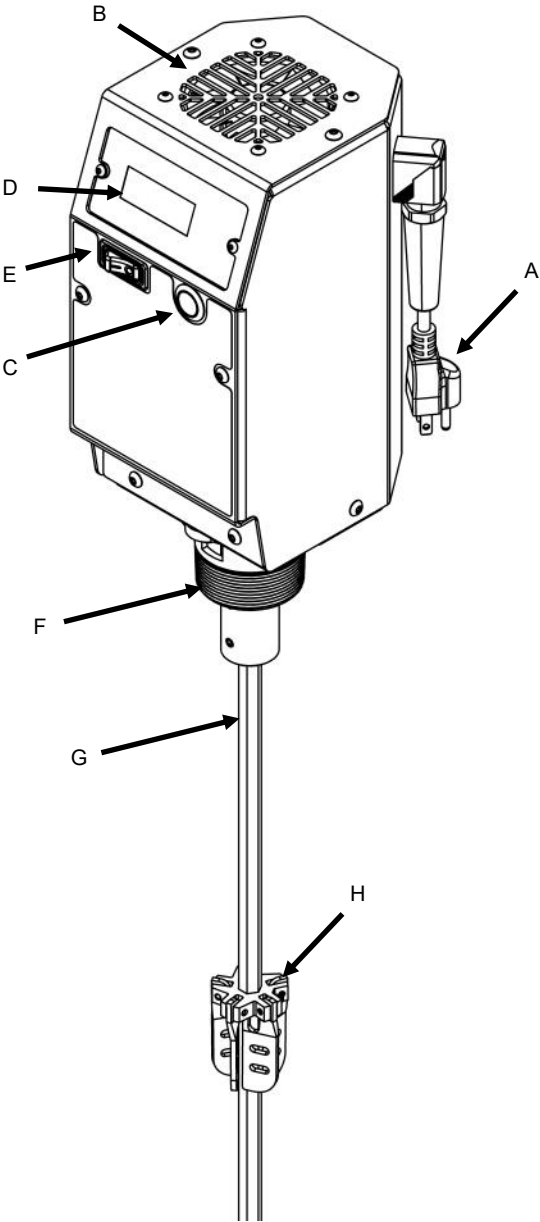
### WARNING

- Read the operators manual before starting this unit. Failure to adhere to instructions can result in severe personal injury.
- Do NOT operate equipment that is not mounted in a 2" bung on a 55 gallon drum.
- To avoid potential injury, disconnect power cord prior to transporting or moving equipment from one drum to the next drum.
- Keep clear of moving parts, do not operate equipment with enclosure panels removed.

### CAUTION

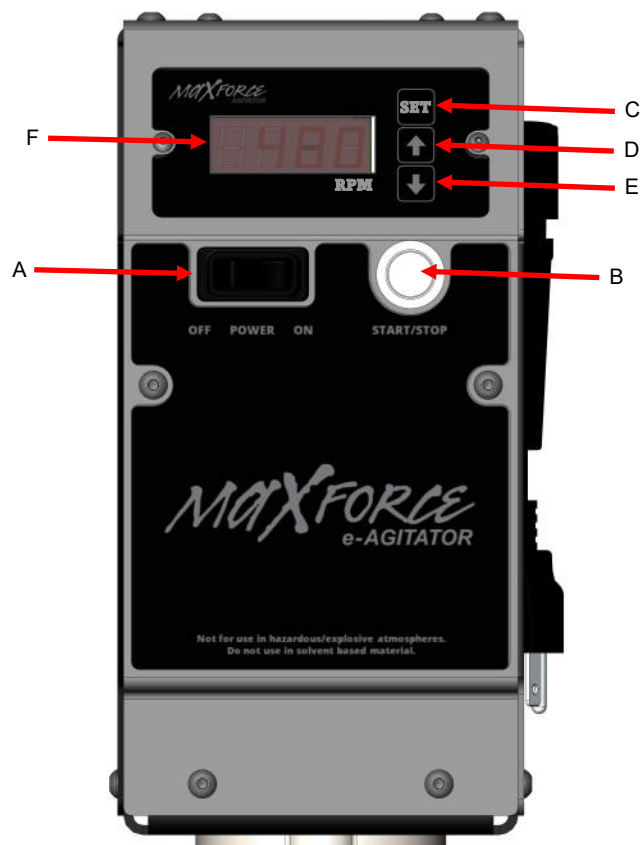
- To avoid electrical shock, disconnect power cord prior to electrical system service
- Motor enclosure may get warm to the touch when equipment is run for long periods of time.

# Equipment Layout



e-Agitator Components	
A	110/120VAC Plug
B	Cooling Air Intake
C	Motor Start/Stop
D	Motor RPM Display
E	ON/OFF Switch
F	2" NPT Bung Adapter
G	Mixing Shaft
H	Mixing Blade (3 Total)

# Control Panel Layout



Control Panel	
A	Power ON/OFF Switch
B	Motor START/STOP Pushbutton
C	RPM SET Button
D	RPM Up Arrow
E	RPM Down Arrow
F	RPM Display/Setpoint

# Specifications

## Performance

Output Speed	0-500 rpm
Output Torque	55 in-lbs

## Power

Voltage	110/120 VAC
Amperage	4A
Rated Motor Power	378 W

## Dimensions

Length	7.1"
Width	5.6"
Height	47" (12.1" From Top of Drum)
Weight	16.5 lbs
Bung Adapter Size	2" NPT

<b>Wetted Parts</b>	Stainless Steel
---------------------	-----------------

# Operation

## Install the agitator

1. Due to differing drum heights, the expanding agitator blades may need to be adjusted up and down the agitator shaft. Loosen the set screws on each blade and adjust to the appropriate height, then re tighten securely to the shaft.
2. Install the agitator into a 55 gallon drum by folding the expanding blades and inserting them into the 2" NPT female bung on the topside of the drum. Thread the agitator clockwise to tighten.

### NOTICE

- Ensure the agitator shaft is not contacting the bottom of the drum.
- The agitator should be hand tightened into the drum.

## Operating the agitator

1. With the agitator fully tightened into a drum of material, connect the agitator to a 120VAC power source with the attached plug.
2. Switch the power switch to the ON position. The RPM display will illuminate and the cooling fan will turn on.

### CAUTION

- Never operate the agitator in an empty drum or not installed in a drum.
- Do not attempt to use the agitator while holding it, or otherwise supporting it in a smaller container.

3. To change the desired RPM setpoint, press the up or down arrow on the RPM display. The number that is displayed is the RPM setpoint. Use the arrows to adjust the RPM setpoint to the desired value, and then press the SET button to lock the setpoint.

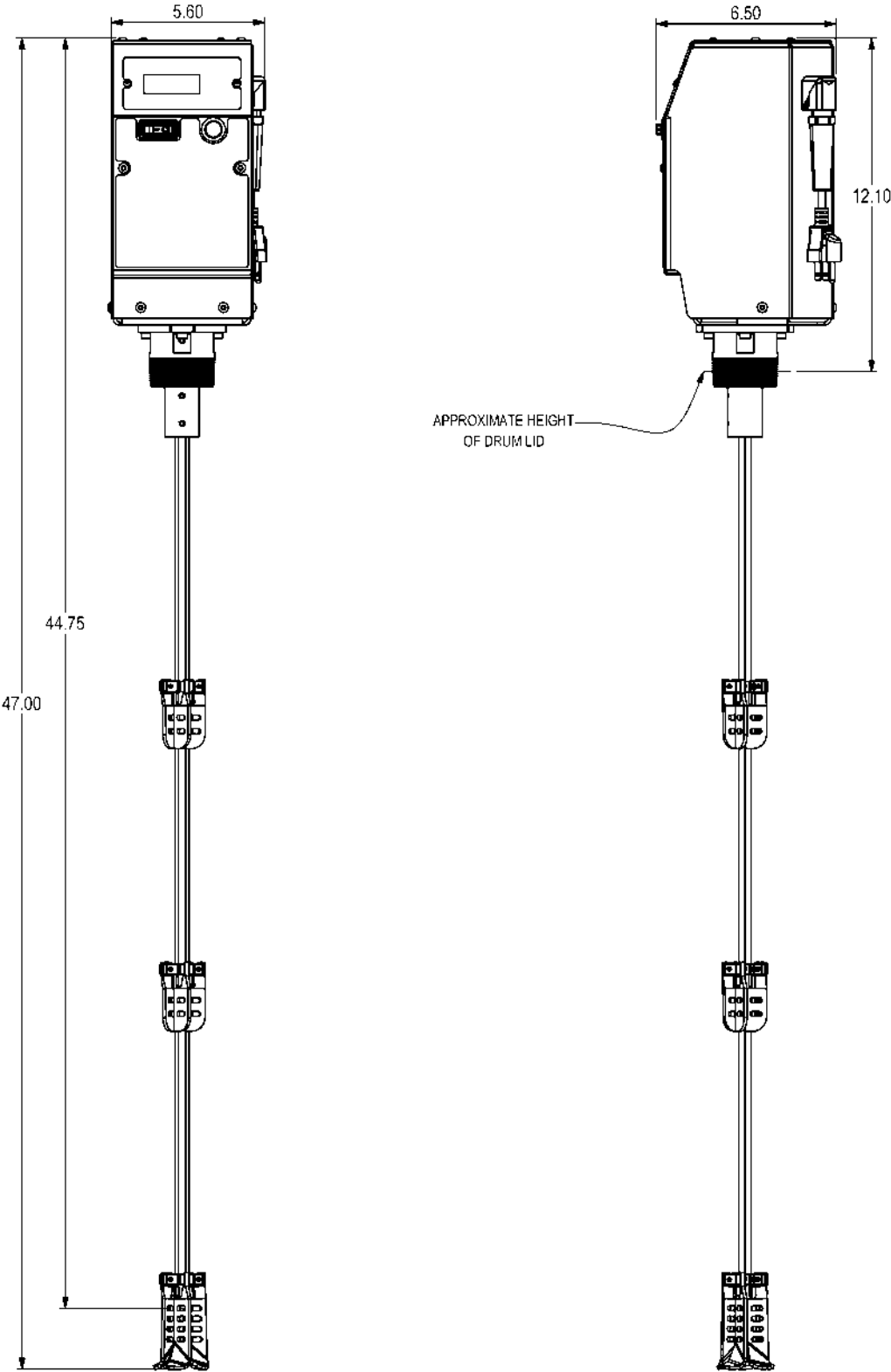
### NOTICE

- The agitator will store the previous RPM setpoint from the last time it was shutdown.
- If the SET button is not pressed, after approximately 3 seconds the unit will revert to the previous RPM setpoint.

4. Press the motor START/STOP button to begin agitating. The agitator will begin turning, and the agitator RPM will display on the screen. It may take a few moments to adjust it's speed to the RPM setpoint.
5. To stop the agitator, press the motor START/STOP pushbutton again, or switch the power switch to the OFF position. It may take a few moments for the agitators blades to slow.
6. When finished for the day, stop the agitator motor, and unplug the 120V power cord.

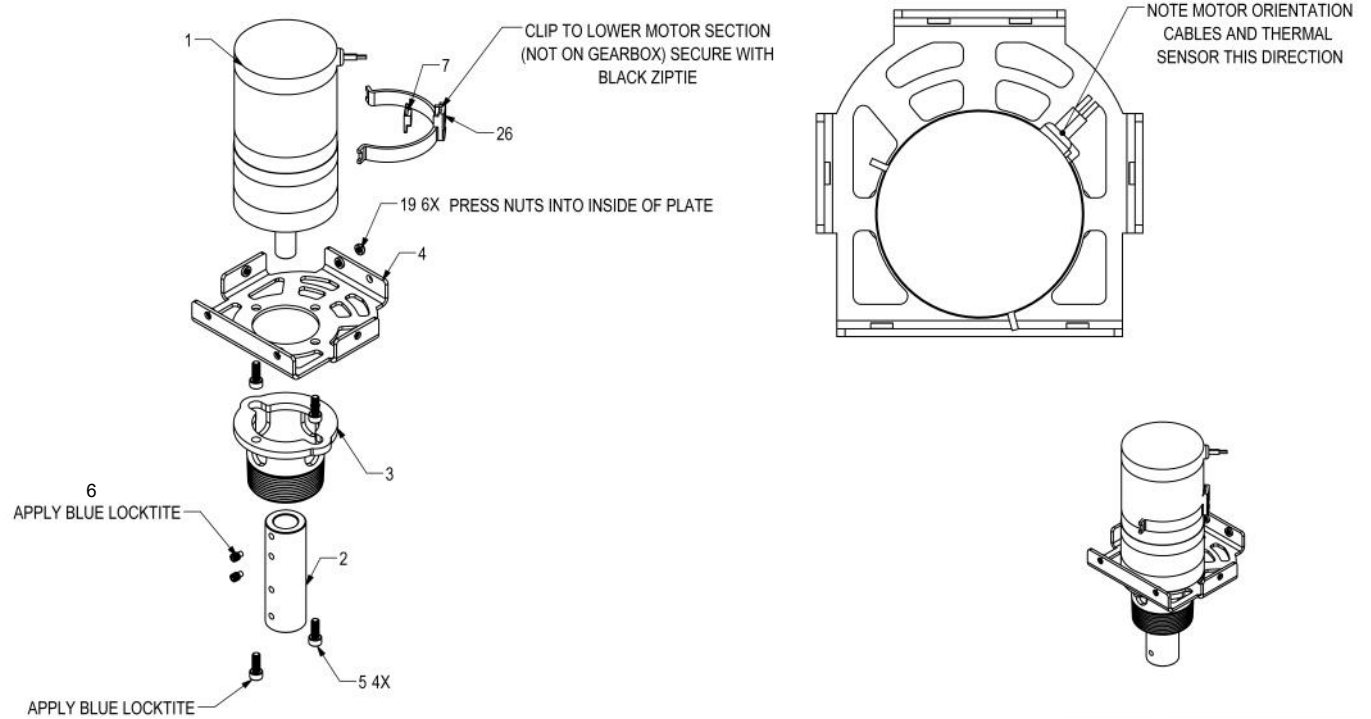
# Technical Data

## Agitator Dimensions



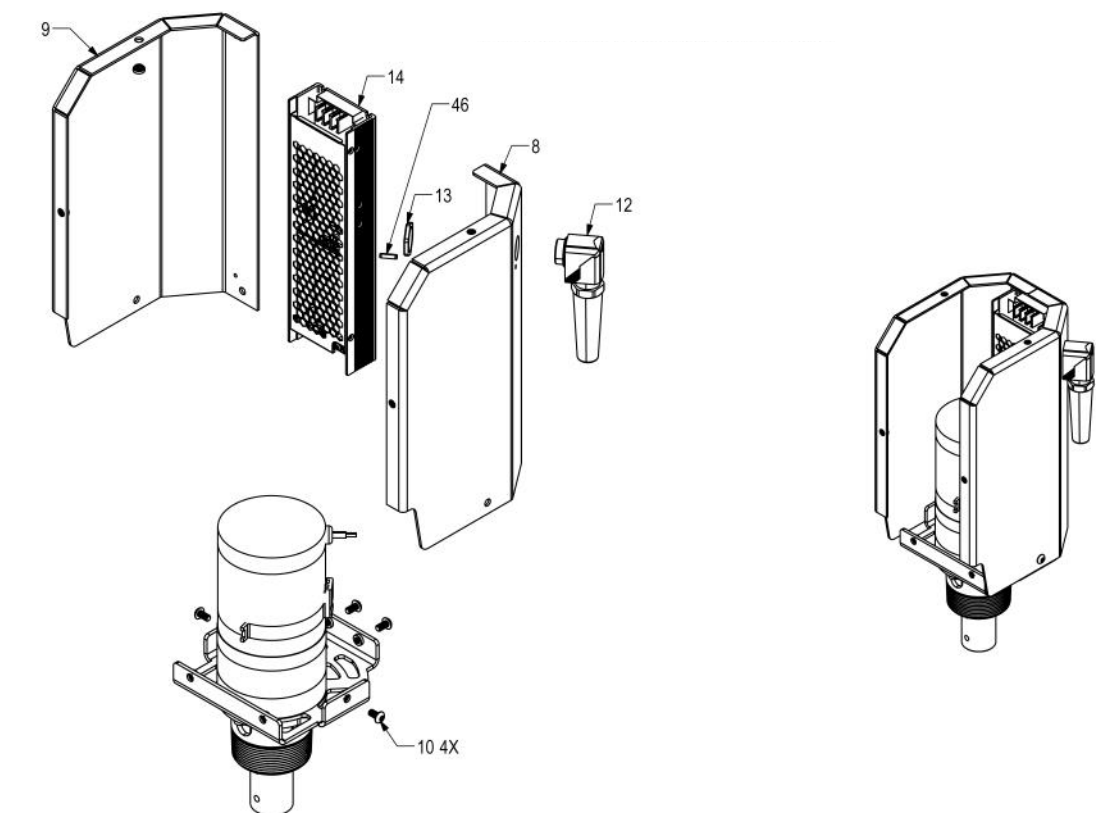
# Parts

## Motor Assembly



Ref.	Part No.	Description	Qty
1	V10442-50	BRUSHLESS DC GEARMOTOR	1
2	C10442-68	SHAFT COUPLER	1
3	C10442-70	BUNG MOUNT WELDMENT	1
4	C10442-84	MOUNT PLATE, HV AGITATOR	1
5	V10442-35	SOCKET HEAD CAP SCREW	1
6	V10442-36	DOG POINT SET SCREW	2
7	V10442-60	THERMOSTAT	1
19	V10442-48	PRESS-FIT NUT	6
26	C10442-89	THERMO SWITCH MOUNT	1

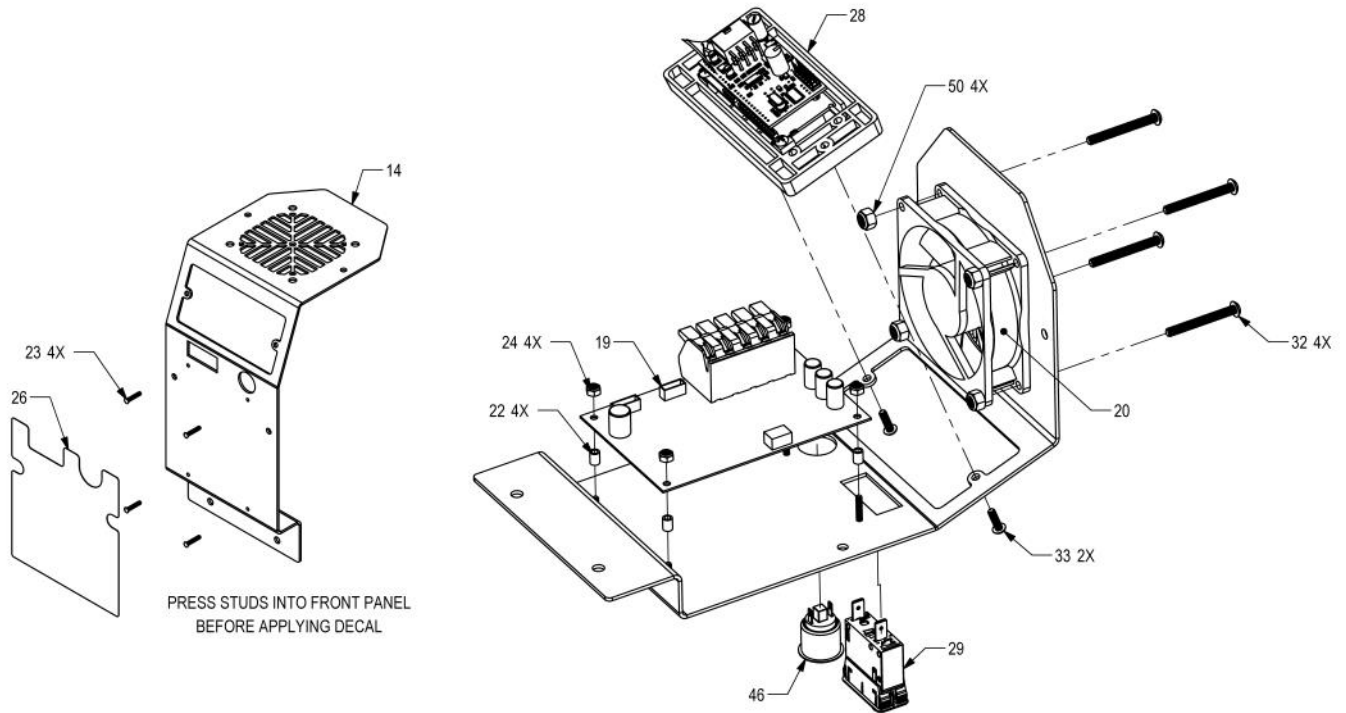
EXPLODED VIEW



Ref.	Part No.	Description	Qty
8	C10442-86	COVER, RIGHT	1
9	C10442-87	COVER, LEFT	1
10	V10442-62	BUTTON HEAD SCREW	4
12	V10442-67	STRAING RELIEF ELBOW	1
13	V10442-68	LOCKING NUT	1
14	V10442-52	POWER SUPPLY	1
46	V10443-49	SPRING PIN	1

## Parts — Cont.

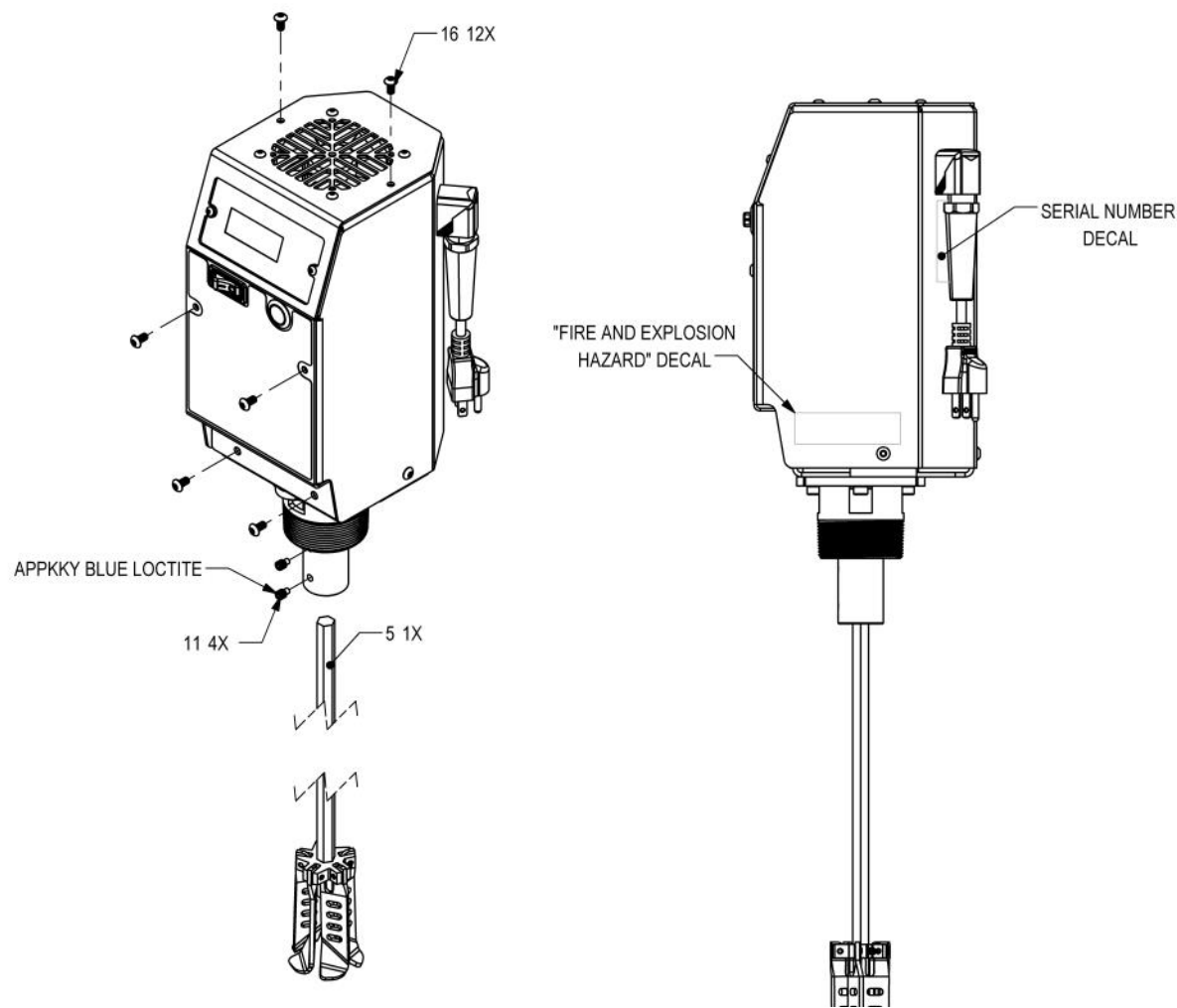
### Control Panel



Ref.	Part No.	Description	Qty
14	C10442-81		1
19	S10442-18	CONTORL BOARD ASSM	1
20	V10442-53	COOLING FAN	1
22	V10442-65	SPACER	4
23	V10442-63	PRESS FIT STUD	4
24	V10442-96	LOCK NUT	4
26	L10442-20	LABEL	1
28	V10442-14	RPM DISPLAY	1
29	V10442-42	POWER SWITCH	1
32	V10442-77	BUTTON HEAD CAP SCREW	4
46	V10443-53	PUSHBUTTON	1
50	V10442-78	NYLON NUT	4

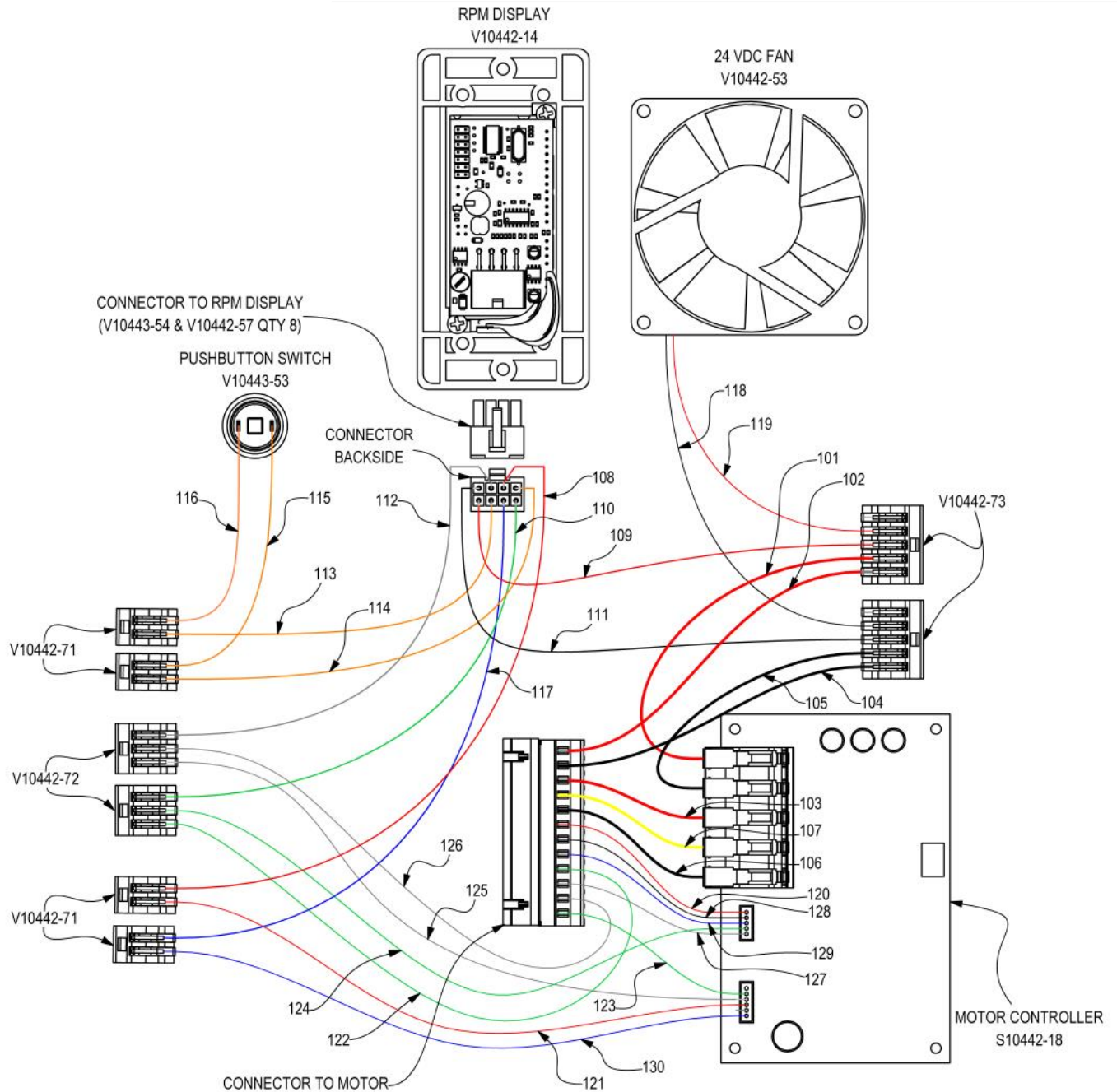
Parts — Cont.

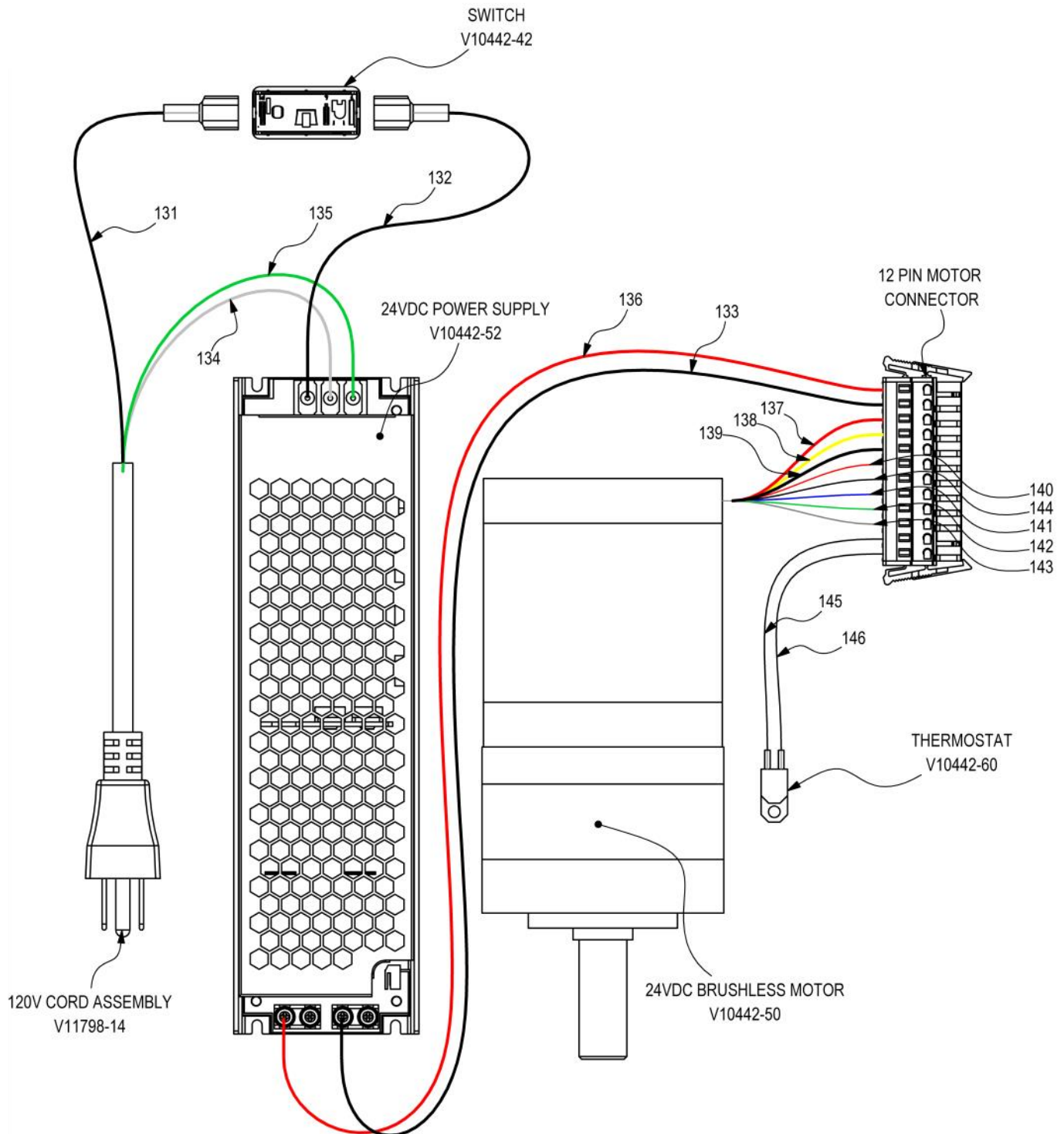
Cover, Agitator Blade Assembly



Ref.	Part No.	Description	Qty
5	17V342	KIT, AGITATOR, SHAFT	1
11	V10442-36	DOG POINT SET SCREW	2
16	V10442-62	BUTTON HEAD SCREW	6

# Wiring Diagram





## This image shows a single sheet of white paper with horizontal ruling lines. The lines are evenly spaced and run across the width of the page. There are no margins, text, or other markings on the paper.

# Warranty

MaxForce warrants all equipment listed in this manual which is manufactured by MaxForce and bearing its name to be free from defects in material and workmanship on the date of sale by MaxForce or authorized distributor to the original purchaser for use. With the exception of any special extended or limited warranty published by MaxForce, MaxForce will, for a period of twelve months from the date of sale, repair or replace any part of the equipment determined by MaxForce to be defective. This warranty applies only when the equipment is installed, operated and maintained in accordance with MaxForce's written recommendations.

This warranty does not cover, and MaxForce shall not be liable for general wear and tear, or any malfunction, damage or wear caused by faulty installation, misapplication, abrasion, corrosion, inadequate or improper maintenance, accident, tampering, or substitution of non-MaxForce component parts. Nor shall MaxForce be liable for malfunction, damage or wear caused by the incompatibility of equipment with structures, accessories, equipment or materials not supplied by MaxForce, or the improper design, manufacture, installation, operation or maintenance or structures, accessories, equipment or materials not supplied by MaxForce.

This warranty is conditioned upon the prepaid return of the equipment claimed to be defective to an authorized MaxForce distributor for verification of the claimed defect. If the claimed defect is verified, MaxForce will repair or replace free of charge any defective parts. The equipment will be returned to the original purchaser transportation prepaid. If inspection of the equipment does not disclose any defect in material or workmanship, repairs will be made at a reasonable charge, which charges may include the costs of parts, labor and transportation.

MaxForce's sole obligation and buyer's sole remedy for any breach of warranty shall be as set forth above. The buyer agrees that no other remedy (including, but not limited to, incidental or consequential damages for lost profits, lost sales, injury to person or property, or any other incidental or consequential loss) shall be available. Any action for breach of warranty must be brought within two (2) years of the date of sale.

MaxForce makes no warranty, and disclaims all implied warranties of merchantability and fitness for a particular purpose in connection with accessories, equipment, materials or components sold but not manufactured by MaxForce. These items sold, but not manufactured by MaxForce (such as electric motors, gas engines, switches, hose, hydraulic components, etc.) are subject to the warranty, if any, of their manufacturer. MaxForce will provide purchaser with reasonable assistance in making any claim for breach of these warranties.

In no event will MaxForce be liable for indirect, incidental, special or consequential damages resulting from MaxForce supplying equipment hereunder, or the furnishing, performance, or use of any products or other goods sold hereto, whether due to a breach of contract, breach of warranty, the negligence of MaxForce, or otherwise.

*All written and visual data contained in this document reflect the latest product information available at the time of publication. MaxForce reserves the right to make changes at any time without notice.*