

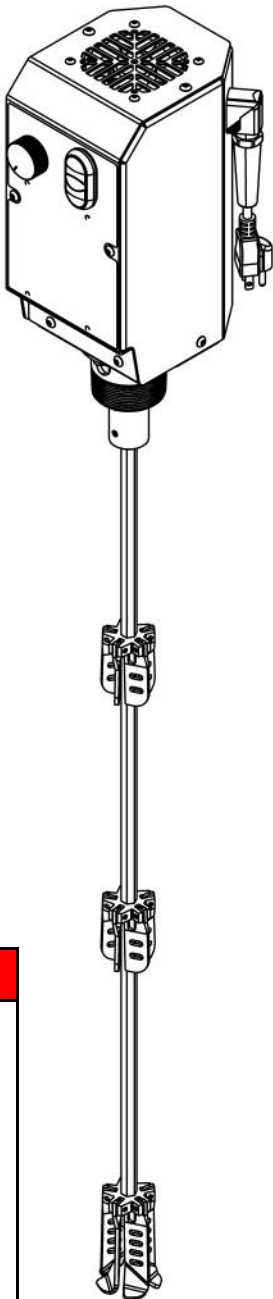
MAXFORCE e-Agitator



Product Description

AGITATOR, HIGH VIS, ELEC, BRUSHLESS

Operation & Parts



WARNING

FIRE AND EXPLOSION HAZARD

Use only non-flammable or water-based materials with this equipment. Do not use materials having flash points lower than 140° F (60° C). For more information about your material, request Safety Data Sheet (SDS) from the supplier. Not for use in explosive environments or environments where ignitable vapors may be present. Inspect the work area for potential hazards before operating this equipment.

Manual Revisions

Revision	Date	Serial No
A	5/4/23	9067408B—

M10442-15-A

2845 W Service Rd Eagan, MN 55121

Table of Contents

Safety	3
Equipment Layout	4
Control Panel Layout	5
Specifications	6
Operation	7
Technical Data	
<i>Dimensions</i>	8
Parts	9
Wiring Diagram	14
Warranty	17

**For parts, service, and technical assistance,
contact your equipment distributor:**

Safety

General Safety Information

READ THE MANUAL

- Ensure any operator of this equipment has read and understands the manual before operating.
- Do not attempt to repair or modify this equipment without consulting the manual.

EQUIPMENT MISUSE HAZARD

- Equipment misuse can cause the equipment to rupture or malfunction and result in serious injury.
- This equipment is for professional use only.
- Read all instruction manuals, tags, and labels before operating the equipment.
- Use the equipment only for its intended purpose. If you are not sure, call your distributor.
- Do not alter or modify this equipment. Use only genuine OEM parts.
- Check equipment daily. Repair or replace worn or damaged parts immediately.
- Comply with all applicable local, state, and national fire, electrical, and safety regulations
- Do not leave the work area while equipment is operating.

FIRE AND EXPLOSION HAZARD

- Improper grounding, poor ventilation, open flames or sparks can cause a hazardous condition and result in a fire or explosion and serious injury.
- Keep the equipment area free of debris, including solvent, rags and uncontained fuel.
- Use only with non-flammable or water-based materials
- Keep a working fire extinguisher on hand at all times in the work area.

Equipment Hazards & Warnings

DANGER

- Do NOT use near solvents or solvent based materials
- Do NOT use near flammable materials or in poorly ventilated areas
- The motor and associated components are not rated for use in explosive environments.

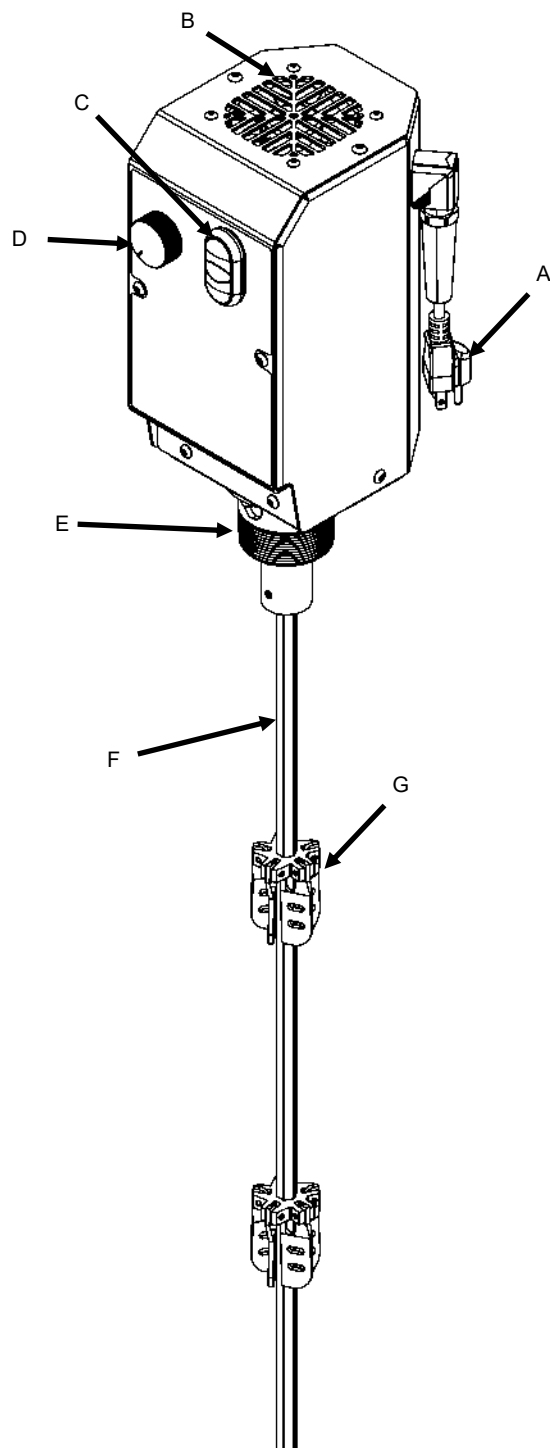
WARNING

- Read the operators manual before starting this unit. Failure to adhere to instructions can result in severe personal injury.
- Do NOT operate equipment that is not mounted in a 2" bung on a 55 gallon drum.
- To avoid potential injury, disconnect power cord prior to transporting or moving equipment from one drum to the next drum.
- Keep clear of moving parts, do not operate equipment with enclosure panels removed.

CAUTION

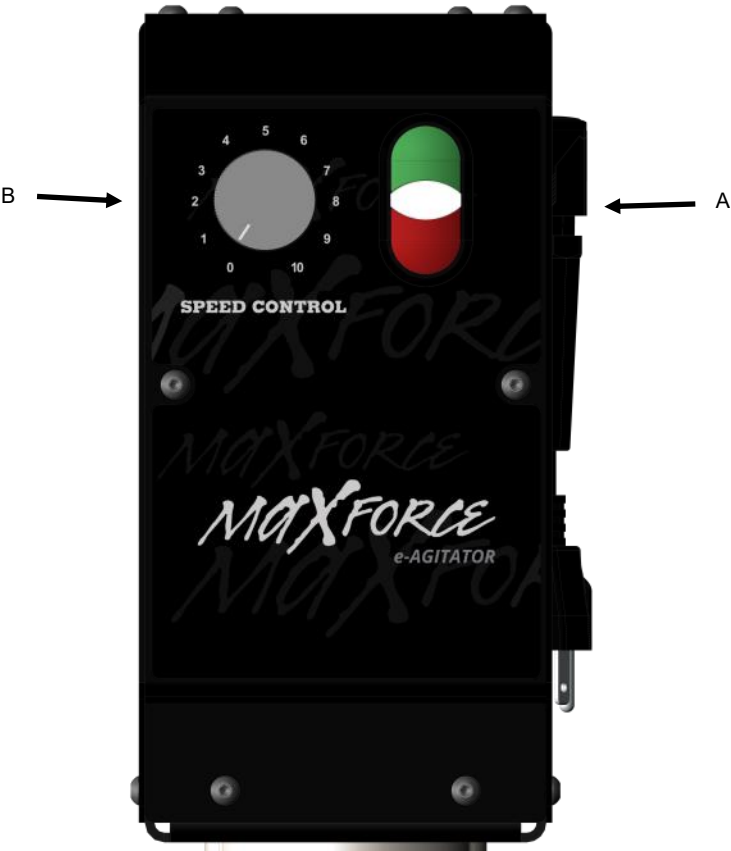
- To avoid electrical shock, disconnect power cord prior to electrical system service
- Motor enclosure may get warm to the touch when equipment is run for long periods of time.

Equipment Layout



e-Agitator Components	
A	110/120VAC Plug
B	Cooling Air Intake
C	Motor Start/Stop
D	Motor Speed Control
E	2" NPT Bung Adapter
F	Mixing Shaft
G	Mixing Blade (3 Total)

Control Panel Layout



Control Panel	
A	Motor Start/Stop Switch
B	Speed Control Knob

Specifications

Performance

Output Speed	0-500 rpm
Output Torque	55 in-lbs

Power

Voltage	110/120 VAC
Amperage	4A
Rated Motor Power	378 W

Dimensions

Length	7.1"
Width	5.6"
Height	47" (12.1" From Top of Drum)
Weight	16.5 lbs
Bung Adapter Size	2" NPT

Wetted Parts	Stainless Steel
---------------------	-----------------

Operation

Install the agitator

1. Due to differing drum heights, the expanding agitator blades may need to be adjusted up and down the agitator shaft. Loosen the set screws on each blade and adjust to the appropriate height, then re tighten securely to the shaft.
2. Install the agitator into a 55 gallon drum by folding the expanding blades and inserting them into the 2" NPT female bung on the topside of the drum. Thread the agitator clockwise to tighten.

NOTICE

- Ensure the agitator shaft is not contacting the bottom of the drum.
- The agitator should be hand tightened into the drum.

Operating the agitator

1. With the agitator fully tightened into a drum of material, connect the agitator to a 120VAC power source with the attached plug.
2. Turn the speed control knob fully counterclockwise to start the agitator in the off position. The agitator can be started in a previously set speed if that is desired.

CAUTION

- Never operate the agitator in an empty drum or not installed in a drum.
- Do not attempt to use the agitator while holding it, or otherwise supporting it in a smaller container.

3. To start the motor, press the green power button on the control panel. The fan will turn on and the green indicator light will show that the unit is in run mode.
4. Slowly turn the speed control knob until you hear the motor turning. Set the speed control knob to the desired speed. Follow the material manufacturers recommendations for agitation speed. The approximate output speeds of the agitator are listed on the Specifications page of this manual.

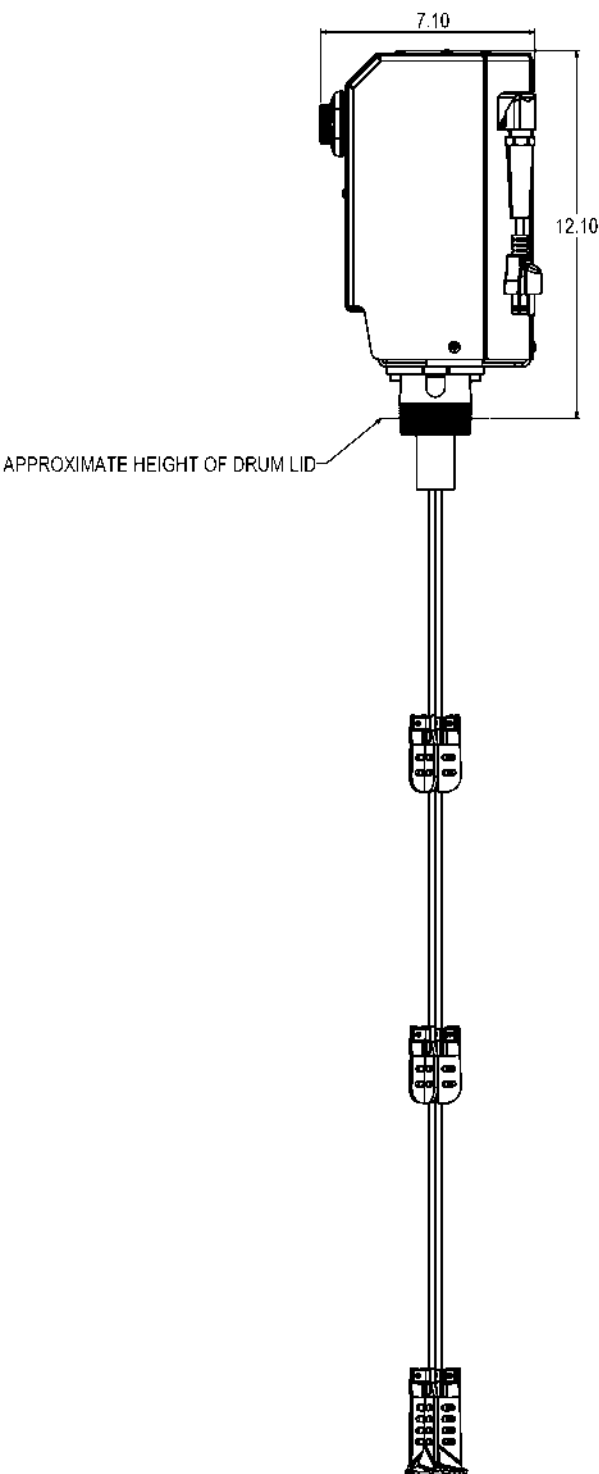
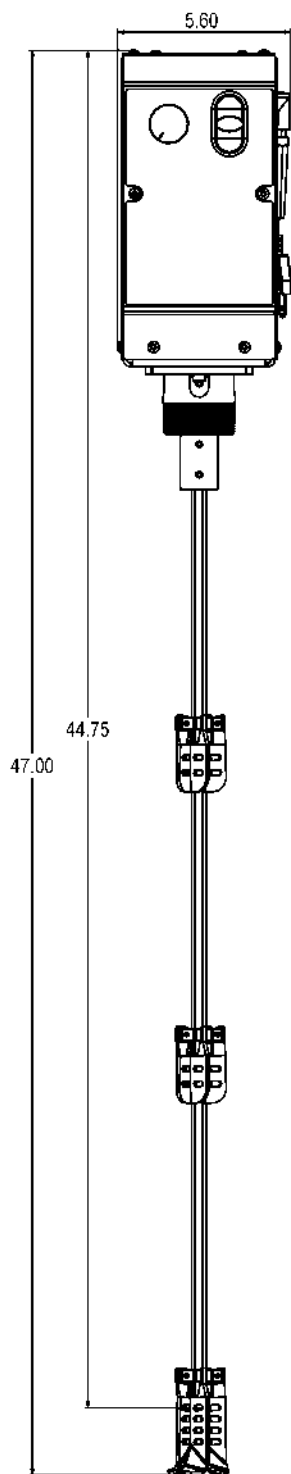
NOTICE

- If the start button is pressed while the speed control knob is set above 0, the motor will immediately begin to turn.

5. To stop the agitator, turn the speed control knob to 0, or press the red stop button on the control panel.
6. When finished for the day, stop the agitator motor, and unplug the 120V power cord.

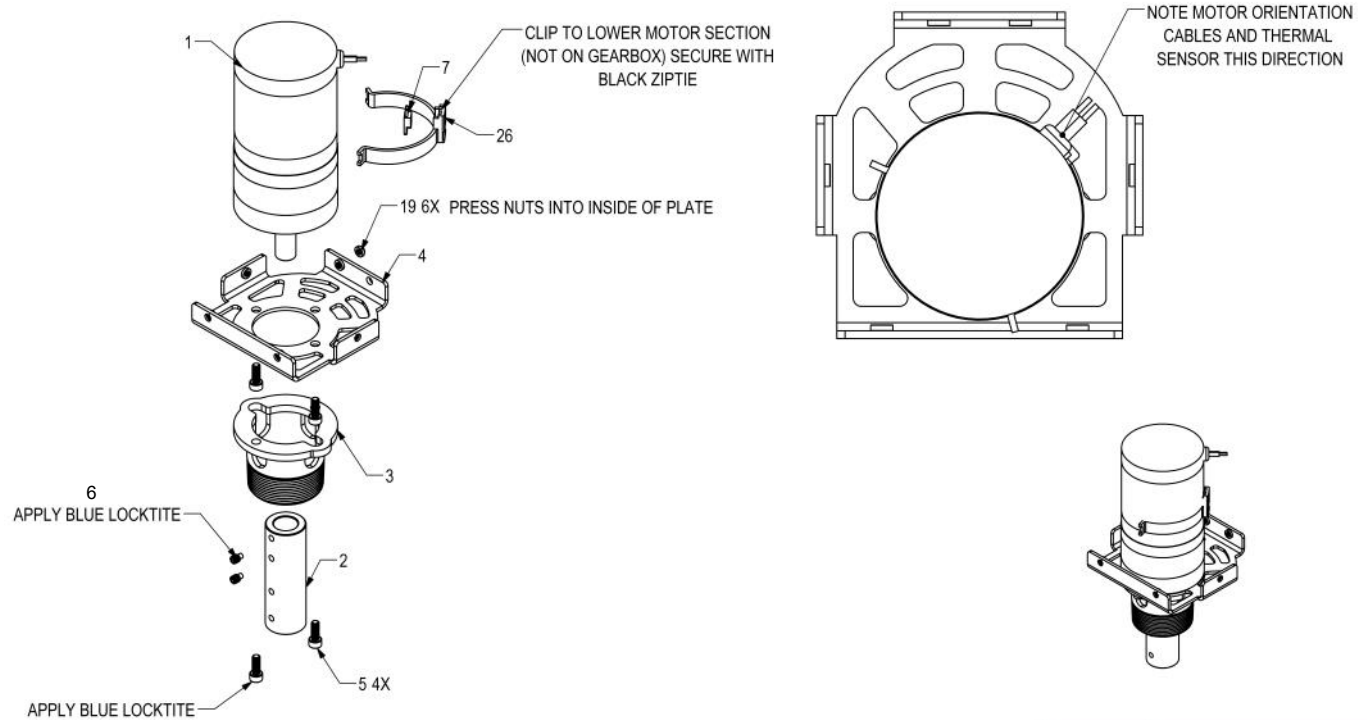
Technical Data

Agitator Dimensions



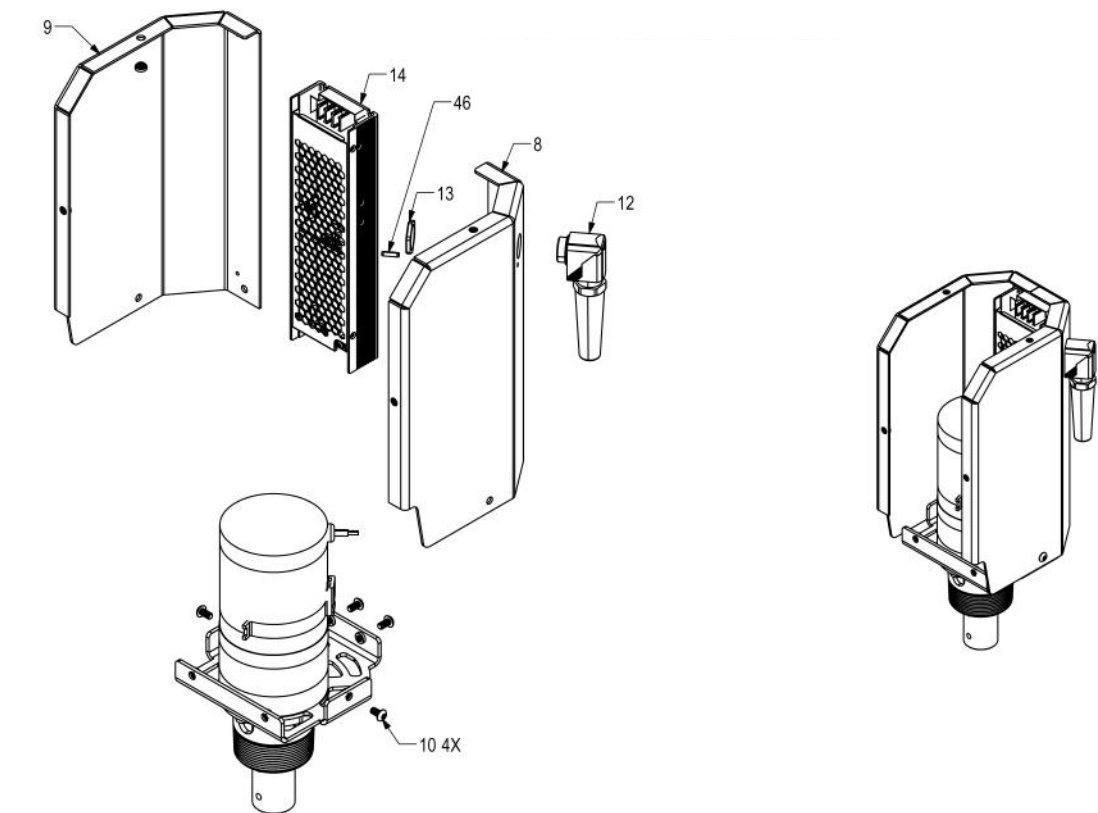
Parts

Motor Assembly



Ref.	Part No.	Description	Qty
1	V10442-50	BRUSHLESS DC GEARMOTOR	1
2	C10442-68	SHAFT COUPLER	1
3	C10442-70	BUNG MOUNT WELDMENT	1
4	C10442-84	MOUNT PLATE, HV AGITATOR	1
5	V10442-35	SOCKET HEAD CAP SCREW	1
6	V10442-36	DOG POINT SET SCREW	2
7	V10442-60	THERMOSTAT	1
19	V10442-48	PRESS-FIT NUT	6
26	C10442-89	THERMO SWITCH MOUNT	1

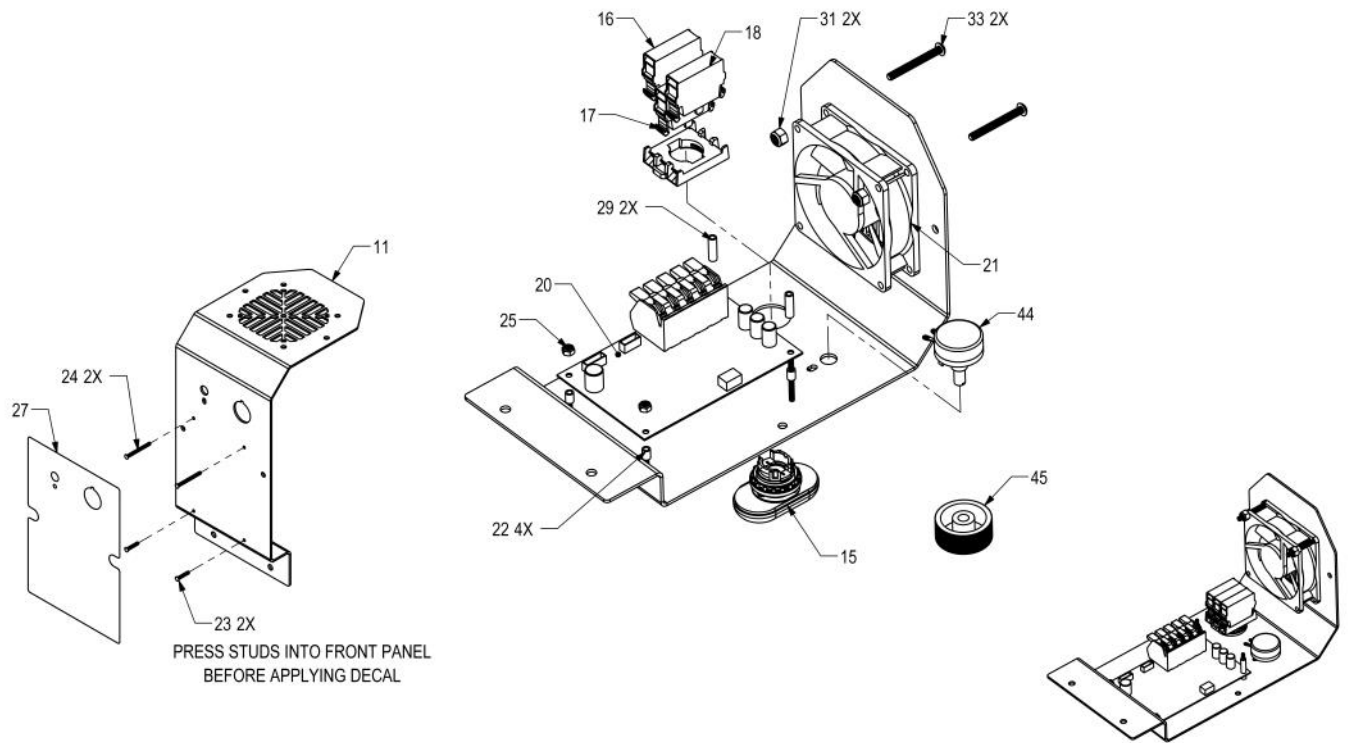
EXPLODED VIEW OF THE POWER SUPPLY ENCLOSURE



Ref.	Part No.	Description	Qty
8	C10442-86	COVER, RIGHT	1
9	C10442-87	COVER, LEFT	1
10	V10442-62	BUTTON HEAD SCREW	4
12	V10442-67	STRAING RELIEF ELBOW	1
13	V10442-68	LOCKING NUT	1
14	V10442-52	POWER SUPPLY	1
46	V10443-49	SPRING PIN	1

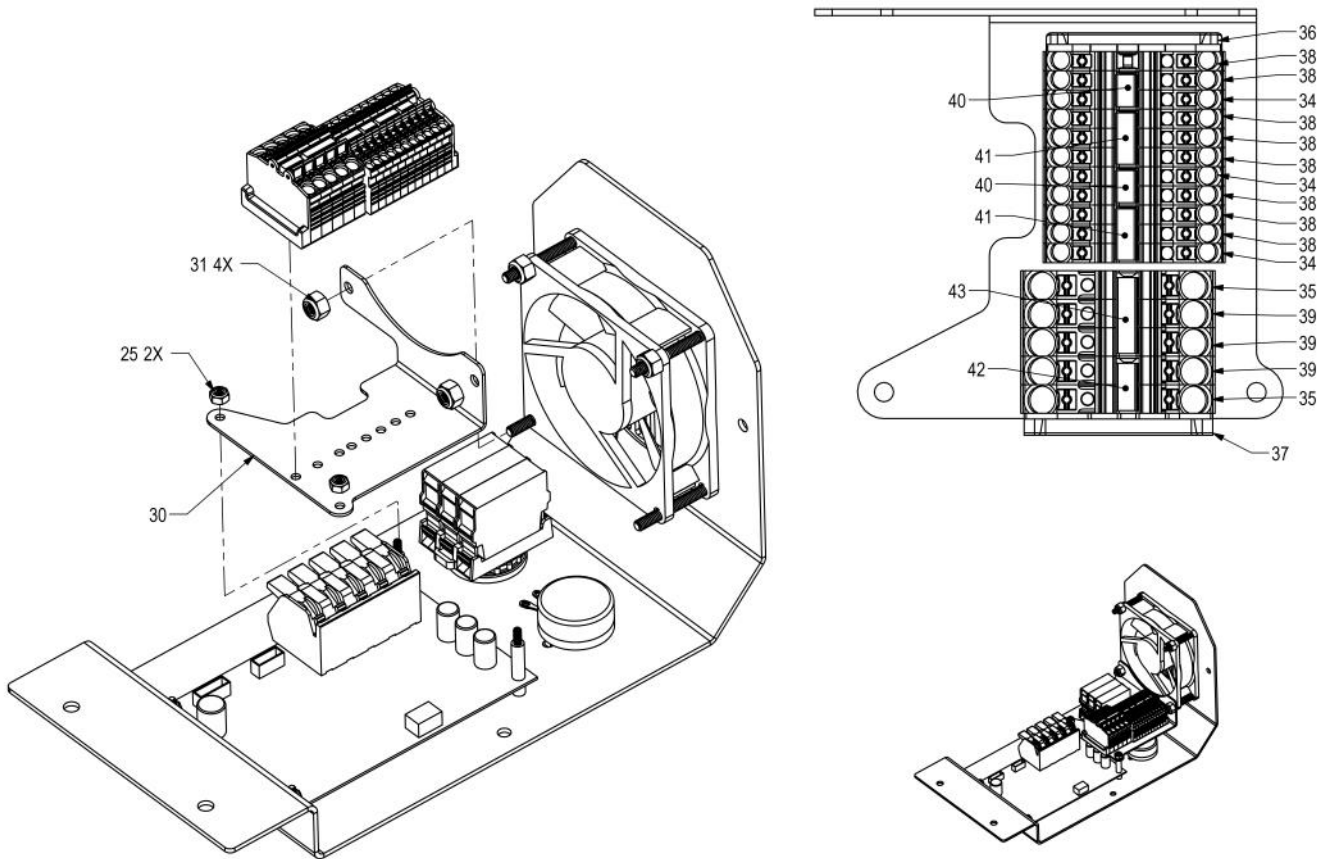
Parts — Cont.

Control Panel



Ref.	Part No.	Description	Qty
16	M22-K10	CONTACT, NO	1
17	M22-LED-G	LIGHT, GREEN	1
18	M22-K01	CONTACT, NC	1
20	S10442-18	CONTROL BOARD ASSM	1
21	V10442-53	COOLING FAN	1
22	V10442-65	SPACER	4
23	V10442-63	PRESS FIT STUD	2
24	V10442-92	PRESS FIT STUD	2
25	V10442-96	LOCK NUT	2
27	L10442-10	LABEL	1
29	V10442-91	SPACER	2
31	V10442-78	NYLON NUT	4
33	V10442-77	BUTTON HEAD CAP SCREW	4
44	V10442-95	POTENTIOMETER	1
45	V10442-97	KNOB, BLACK	1

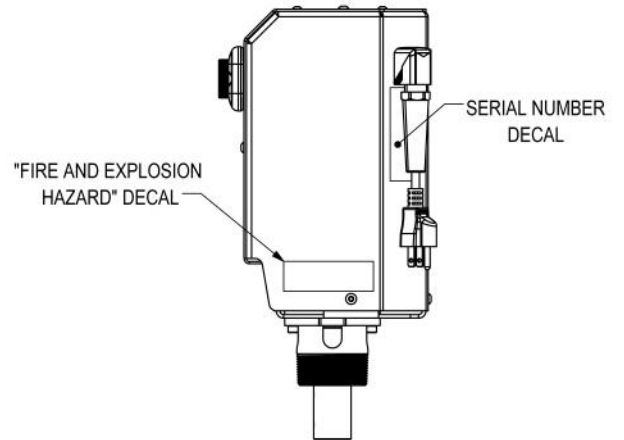
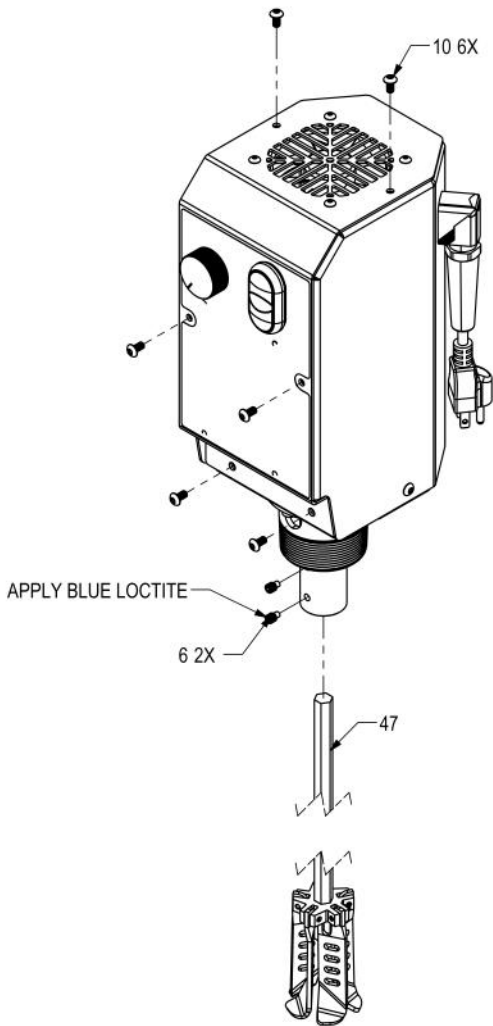
Terminal Block



Ref.	Part No.	Description	Qty
25	V10442-96	LOCK NUT	2
30	C10442-90	TERMINAL BLOCK MOUNTING PLATE	1
31	V10442-78	NYLON NUT	2
34	V10442-80	TERMINAL BLOCK 24-16 AWG, FOOT	3
35	V10442-81	TERMINAL BLOCK 22-12 AWG, FOOT	2
36	V10442-82	ENDPLATE	1
37	V10442-83	ENDPLATE	1
38	V10442-84	TERMINAL BLOCK 24-16 AWG	8
39	V10442-85	TERMINAL BLOCK 22-16 AWG	3
40	V10442-86	JUMPER, 2 WAY	2
41	V10442-87	JUMPER, 3 WAY	2
42	V10442-88	JUMPER, 2 WAY	1
43	V10442-89	JUMPER, 3 WAY	1

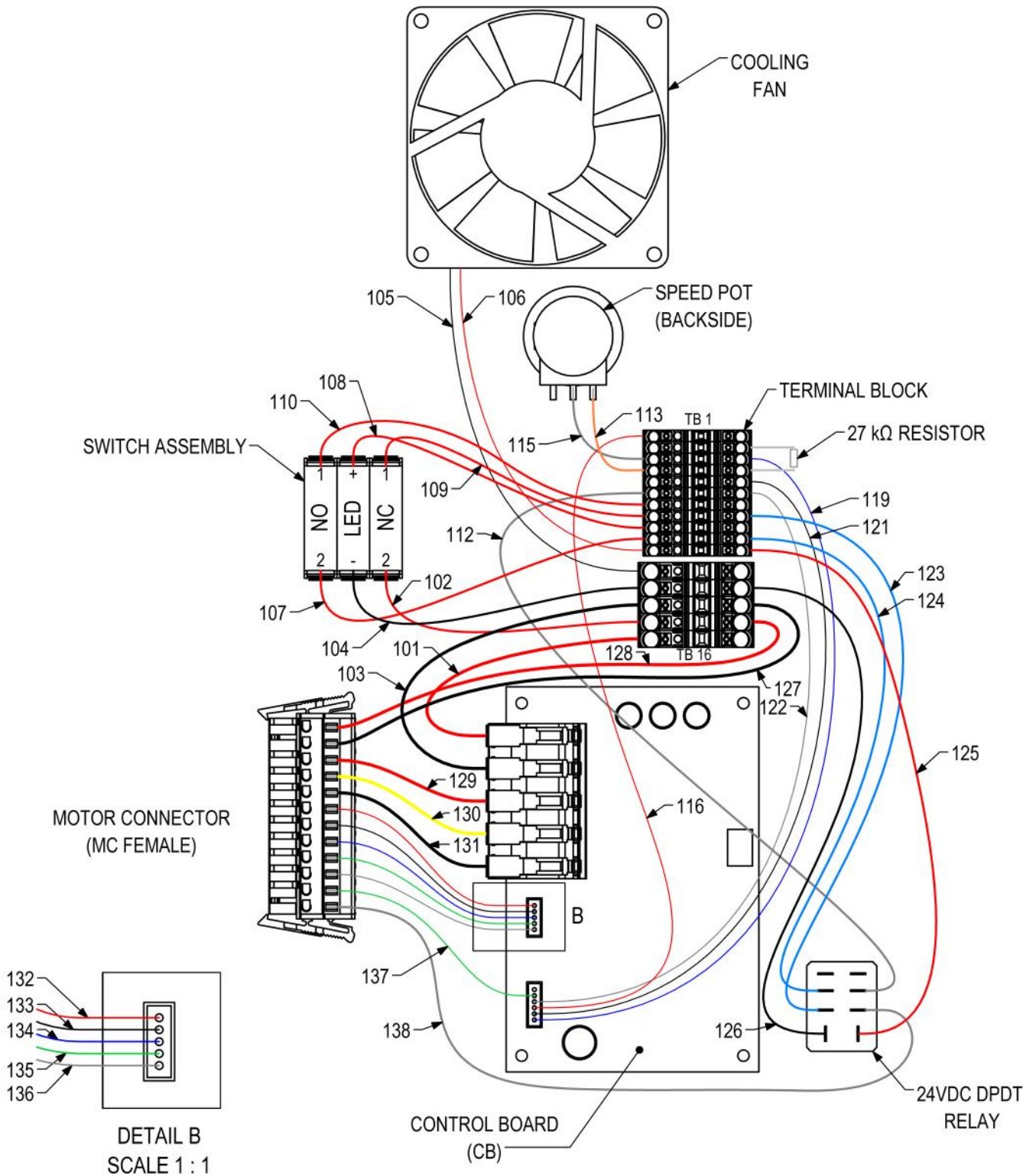
Parts — Cont.

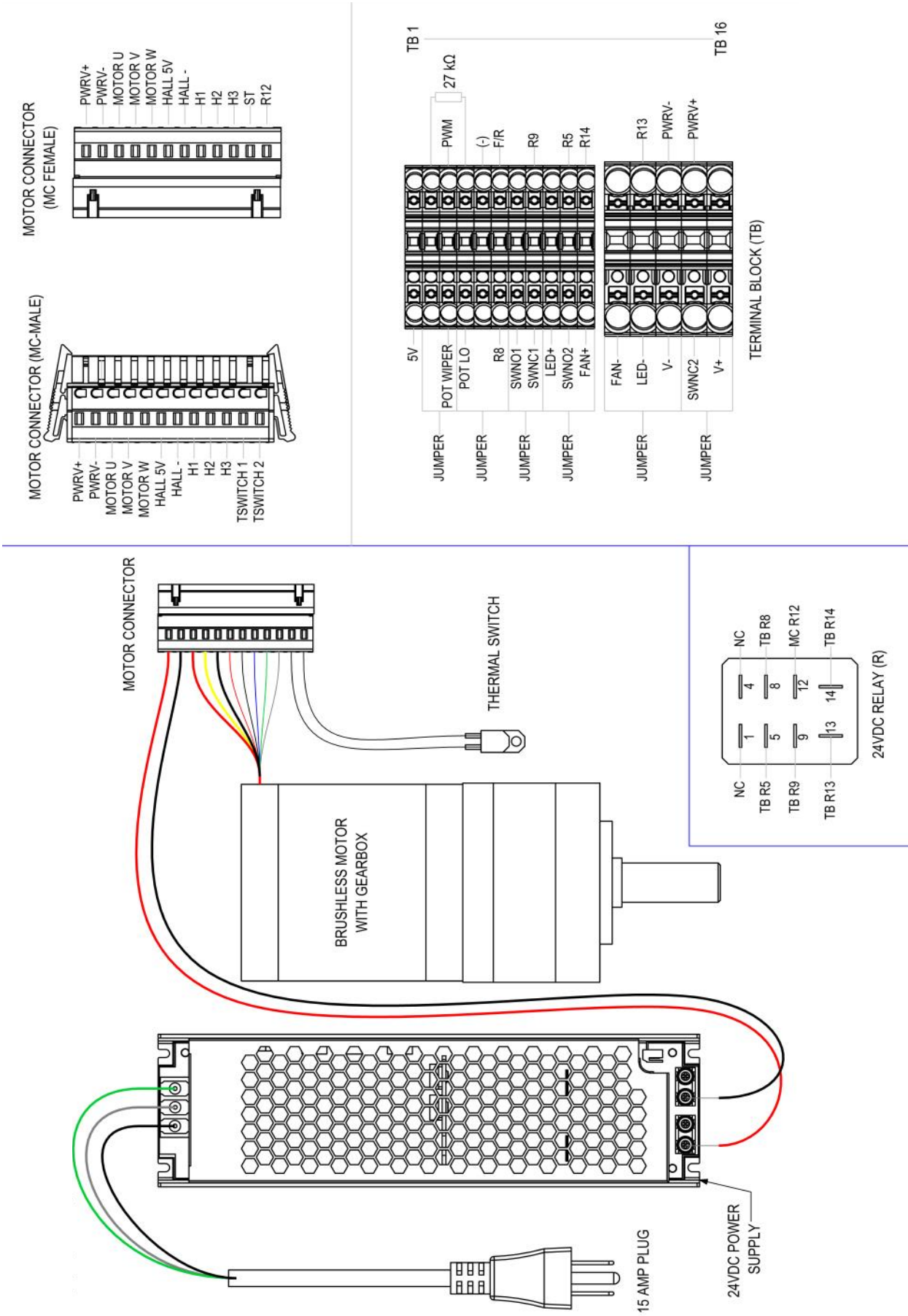
Cover, Agitator Blade Assembly



Ref.	Part No.	Description	Qty
6	V10442-36	DOG POINT SET SCREW	2
10	V10442-62	BUTTON HEAD SCREW	6
47	17V342	KIT, AGITATOR, SHAFT	1

Wiring Diagram





[illegible]

Warranty

MaxForce warrants all equipment listed in this manual which is manufactured by MaxForce and bearing its name to be free from defects in material and workmanship on the date of sale by MaxForce or authorized distributor to the original purchaser for use. With the exception of any special extended or limited warranty published by MaxForce, MaxForce will, for a period of twelve months from the date of sale, repair or replace any part of the equipment determined by MaxForce to be defective. This warranty applies only when the equipment is installed, operated and maintained in accordance with MaxForce's written recommendations.

This warranty does not cover, and MaxForce shall not be liable for general wear and tear, or any malfunction, damage or wear caused by faulty installation, misapplication, abrasion, corrosion, inadequate or improper maintenance, accident, tampering, or substitution of non-MaxForce component parts. Nor shall MaxForce be liable for malfunction, damage or wear caused by the incompatibility of equipment with structures, accessories, equipment or materials not supplied by MaxForce, or the improper design, manufacture, installation, operation or maintenance or structures, accessories, equipment or materials not supplied by MaxForce.

This warranty is conditioned upon the prepaid return of the equipment claimed to be defective to an authorized MaxForce distributor for verification of the claimed defect. If the claimed defect is verified, MaxForce will repair or replace free of charge any defective parts. The equipment will be returned to the original purchaser transportation prepaid. If inspection of the equipment does not disclose any defect in material or workmanship, repairs will be made at a reasonable charge, which charges may include the costs of parts, labor and transportation.

MaxForce's sole obligation and buyer's sole remedy for any breach of warranty shall be as set forth above. The buyer agrees that no other remedy (including, but not limited to, incidental or consequential damages for lost profits, lost sales, injury to person or property, or any other incidental or consequential loss) shall be available. Any action for breach of warranty must be brought within two (2) years of the date of sale.

MaxForce makes no warranty, and disclaims all implied warranties of merchantability and fitness for a particular purpose in connection with accessories, equipment, materials or components sold but not manufactured by MaxForce. These items sold, but not manufactured by MaxForce (such as electric motors, gas engines, switches, hose, hydraulic components, etc.) are subject to the warranty, if any, of their manufacturer. MaxForce will provide purchaser with reasonable assistance in making any claim for breach of these warranties.

In no event will MaxForce be liable for indirect, incidental, special or consequential damages resulting from MaxForce supplying equipment hereunder, or the furnishing, performance, or use of any products or other goods sold hereto, whether due to a breach of contract, breach of warranty, the negligence of MaxForce, or otherwise.

All written and visual data contained in this document reflect the latest product information available at the time of publication. MaxForce reserves the right to make changes at any time without notice.